

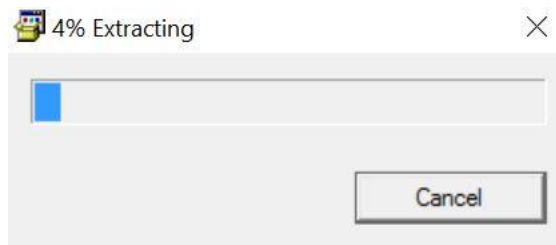
ID-Science Update Guide

IMPORTANT: Close the program, power off your scanner and disconnect it from the computer before you install the latest version. Double-click on the file provided to you, then follow the steps to properly install the latest version. There may be variations in what you will see in the steps below depending on your version of Microsoft Windows. The process may take several minutes. (Note: If you receive any messages about insufficient access privileges, you can just click through them.)

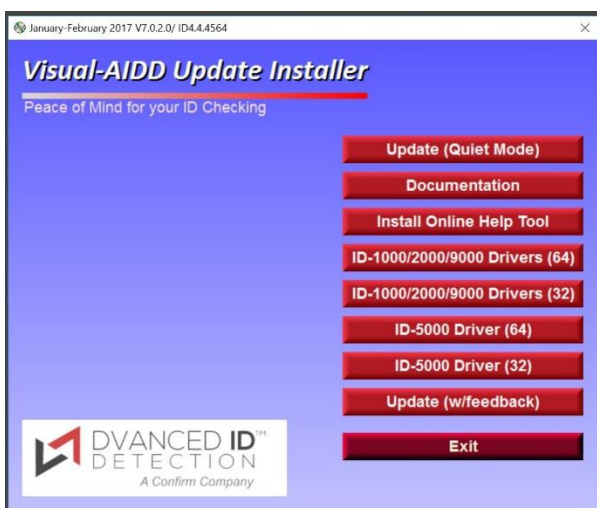
1. After you double-click on the file, the following window will pop up. Click on <Yes> to continue:



2. Wait until the extraction is complete:



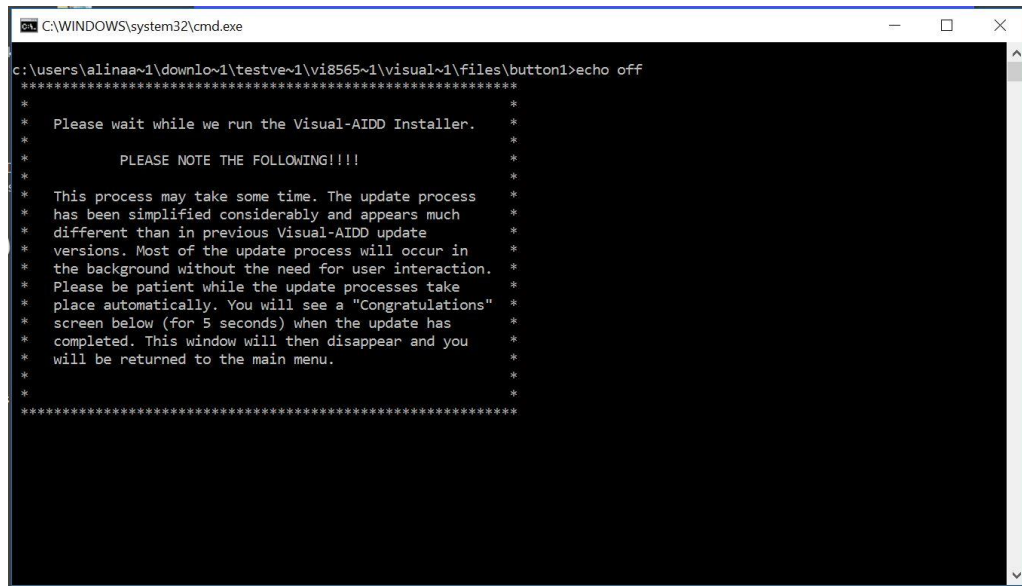
3. Once the extraction is complete, you will see this window. Select <Update> to begin the update:



We suggest that you pick <Update w/feedback> so you could click through the windows and make sure that all the elements get updated. This option will allow you to see if some part of the update was not successful.

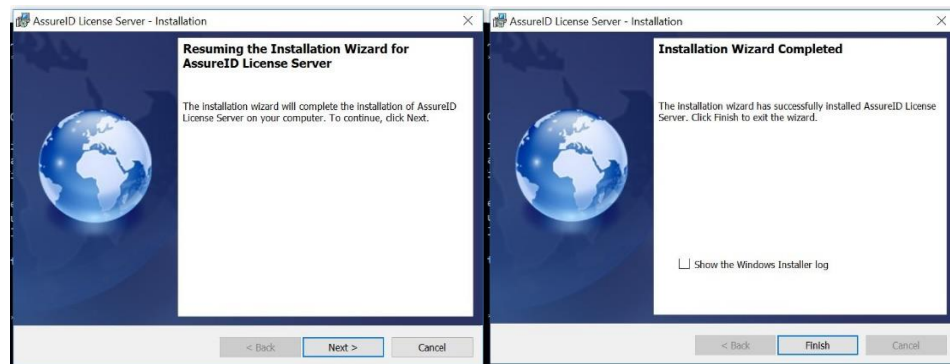
If you want to skip all the windows, you can pick the <Quiet Mode>, but you will not know if something went wrong during the process.

4. This window will appear, indicating progress. No action needed, just wait:



```
C:\WINDOWS\system32\cmd.exe
c:\users\alinaa~1\downlo~1\testve~1\vi8565~1\visual~1\files\button1>echo off
*****
*
* Please wait while we run the Visual-AIDD Installer.
*
* PLEASE NOTE THE FOLLOWING!!!!
*
* This process may take some time. The update process
* has been simplified considerably and appears much
* different than in previous Visual-AIDD update
* versions. Most of the update process will occur in
* the background without the need for user interaction.
* Please be patient while the update processes take
* place automatically. You will see a "Congratulations"
* screen below (for 5 seconds) when the update has
* completed. This window will then disappear and you
* will be returned to the main menu.
*
*
*****
```

5. If you pick the <Update w/feedback> option, you will get windows where you will need to click on <Next> or <Finish>, just click through all the windows you get:



6. When the window with the black background disappears, you can close the menu window (the one with the blue background and red buttons). Turn your scanner back on and re-connect it to the computer. Open Visual-AIDD and check the Help tab to be sure you are running the proper versions of Visual-AIDD and the ID Engine. The Visual-AIDD application may be a little slower to start up the first time you use the updated version since it will be using newer software modules as well as updated drivers. Congratulations - you have completed the update!